



Tyden Ball Seal

The Tyden Ball Seal is a fixed length flat metal strap seal that has been the global standard for tamper indicative truck seals.

Applications

Rail Cars	Tanker Trucks
Containers	Truck/Trailer Doors
Hopper Cars	

Features

- A world standard for more than 100 years and offers the most security for a tamper-indicative
- Double locking ring design provides 100% effective closure
- Seal end is visible for inspection through sight viewing hole
- Removal impossible without leaving evidence of tampering
- Optional safety rolled edge for easy handling

Materials

Tin Plated Steel.

Strength Characteristics

Break apart strength: 110lbs (50kg)

Dimensions

Actual measurements:
 Tail length: 180mm
 Overall length: 215mm

Marking/print

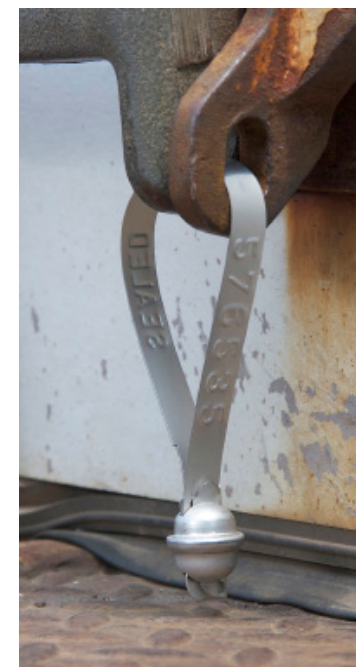
- Minimum quantities apply to customized versions of this product – please call for details
- Standard: Embossed
- Optional: Ink Jet
- Barcoding available on white or yellow seals

Stock Colours

Mill Finish

Packaging

Standard Packaging: 100/wire; 1,000/carton
 Carton Dimensions: 16"x13"x6" (406x320x152cm)
 Carton Weight: 15lbs (6.8kg)

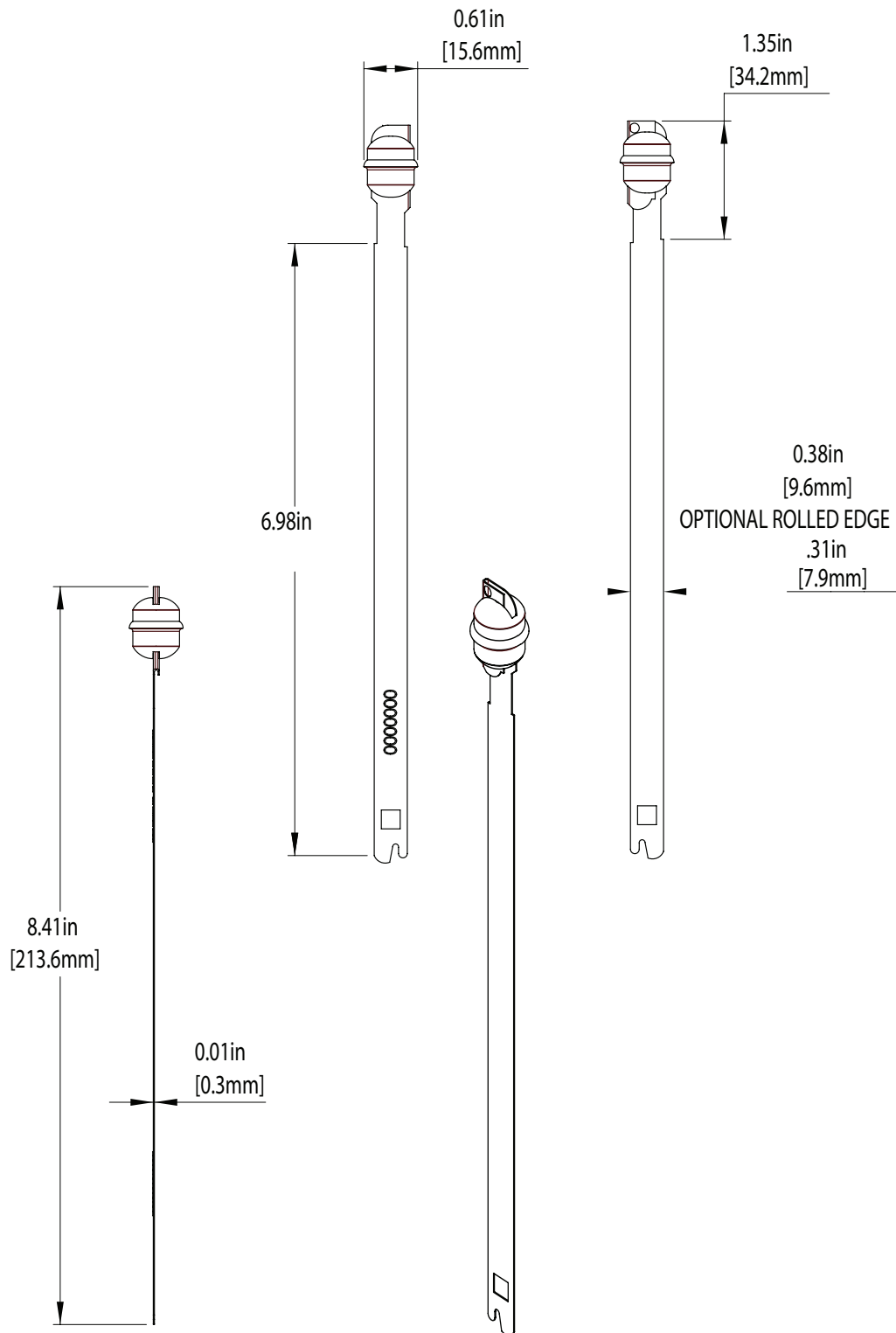


Tyden Ball Seal



Tyden Ball Seal

The Tyden Ball Seal is a fixed length flat metal strap seal that has been the global standard for tamper indicative truck seals.



Tyden Ball Seal